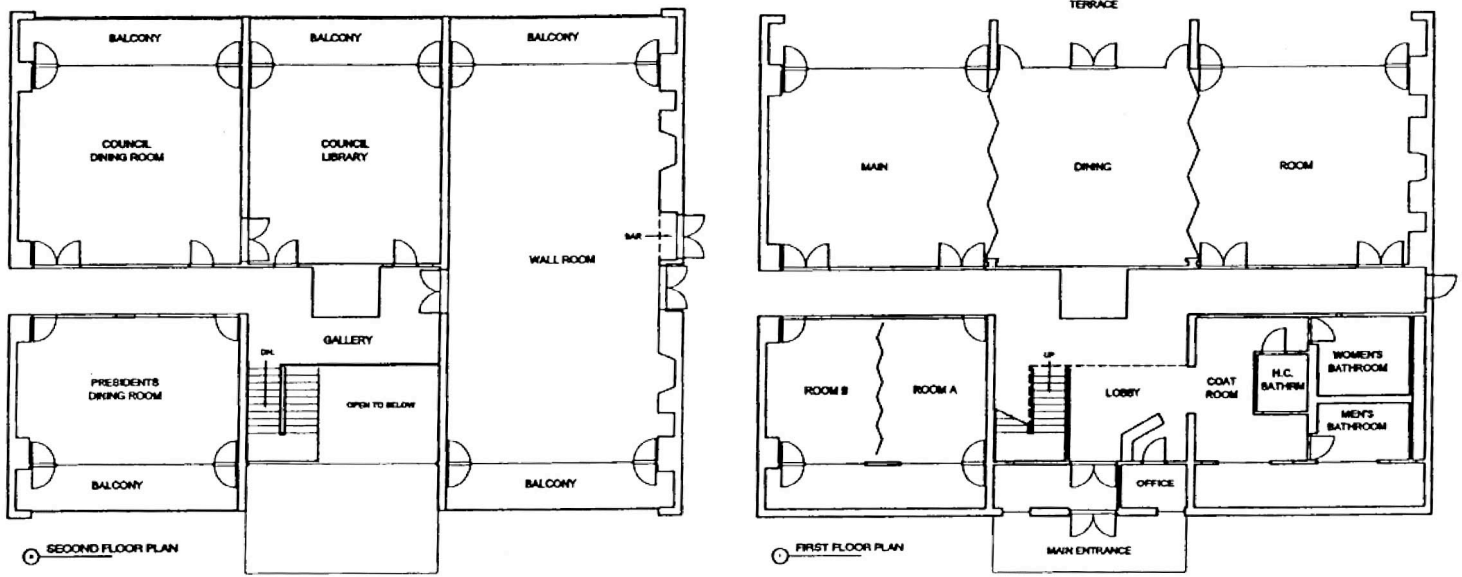


ROOMS & FLOOR PLANS



Room Capacities

| Meeting Room | Dimensions | Square Footage | Theater | Classroom | Conference | Hollow Square | U-Shape | Rounds of 8 | Reception | Rental |
|-------------------------|------------|----------------|---------|-----------|------------|---------------|---------|-------------|-----------|---------|
| Wall Room | 30' x 53' | 1,590 | 160 | 64 | 34 | 40 | 30 | 104 | 150 | \$1,000 |
| Council Dining Room | 30' x 27' | 810 | 70 | 24 | 22 | 36 | 24 | 48 | 60 | \$350 |
| Council Library | 27' x 27' | 729 | 40 | 12 | 16 | 24 | 18 | 32 | 40 | \$250 |
| President's Dining Room | 30' x 25' | 750 | 48 | 12 | 22 | 30 | 24 | 32 | 40 | \$200 |
| Rooms A&B | 30' x 25' | 750 | 40 | 12 | 22 | 30 | 24 | 32 | 40 | \$100 |
| Main Dining Room | 27' x 87' | 2,349 | N/A | N/A | N/A | N/A | N/A | 136 | 200 | \$1,000 |
| Terrace | | | | | | | | | 150 | \$750 |

These room capacities are based on the maximum use of each space.

Actual capacities may be lower due to additional room setup requests.